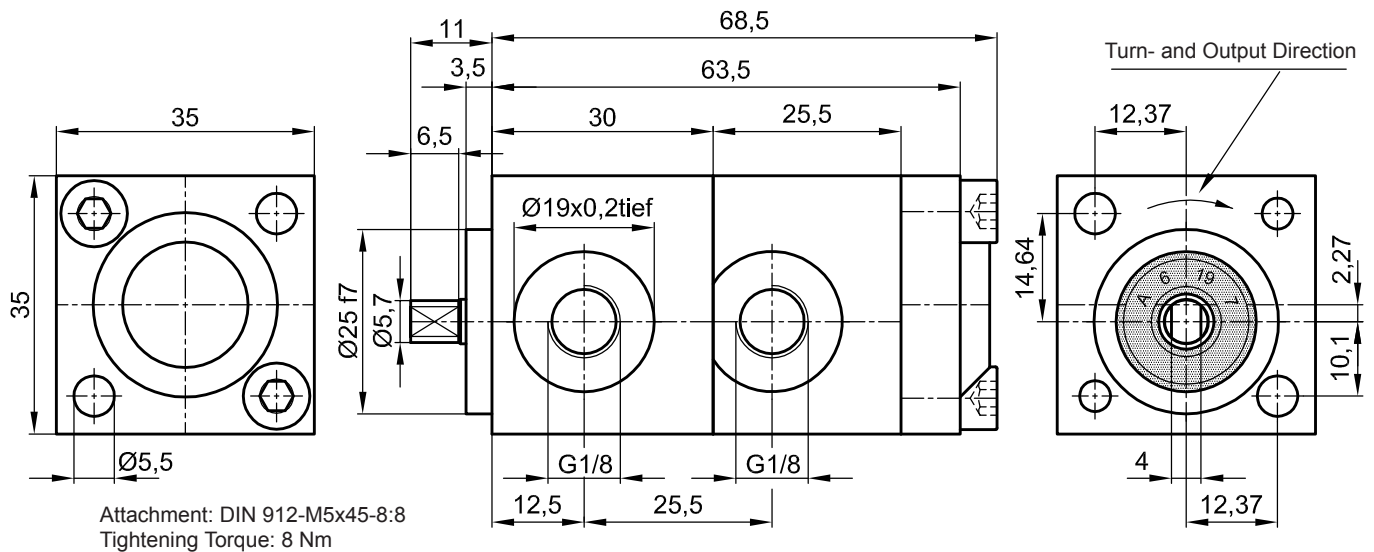


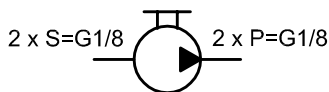
# Internal Gear Driven Pump IPZ 1 - HR 7 Double with 2 x 0,45 ccm/RPM

Default Design (Clockwise Shaft Rotation Viewed)



The technical data are based on a viscosity of 46 sq mm/s

Symbol:

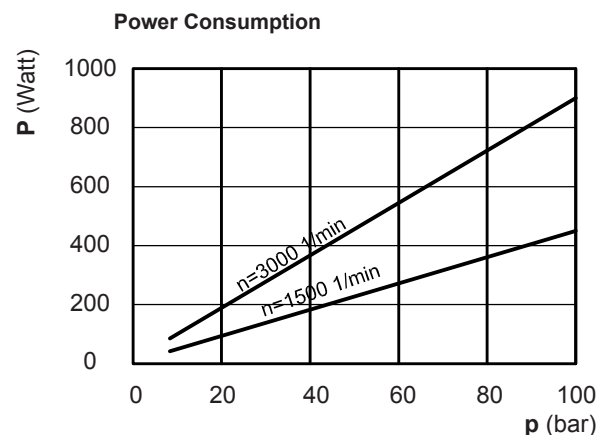
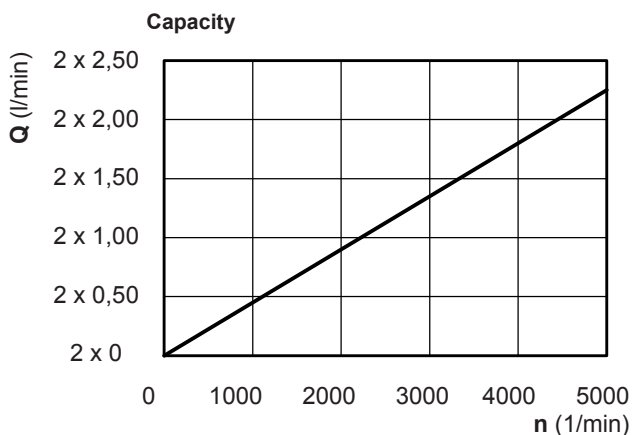


ccm/ rpm	Press./bar max.		RPM max.		RPM min.	Mass	Order No.
	P1	P max	Press. P1	Depress.	Press. P1		
2 x 0,45	80	100	4000	5000	1000	500 g	30081-142

P1 = Working Pressure max. P max. = Pressure Peak

Working Pressure / bar						
Capacity at 1.500 RPM (l/min)						
Power Consumpt./W at 1.500 RPM						
bar	2x10	2x20	2x40	2x60	2x80	2x100
l/min	2x0,65	2x0,65	2x0,63	2x0,59	2x0,54	2x0,48
Watt	45	90	180	270	360	450

Working Pressure / bar						
Capacity at 3.000 RPM (l/min)						
Power Consumpt./W at 3.000 RPM						
bar	2x10	2x20	2x40	2x60	2x80	2x100
l/min	2x1,34	2x1,33	2x1,31	2x1,27	2x1,22	2x1,16
Watt	90	180	360	540	720	900



Please specify Pressure, RPM, Temperature, Gain and the Duty Cycle by ordering!



**Jung-Fluidtechnik GmbH**  
Mohrenstrasse 7  
D-76275 Ettlingen

**Phone** +49 (0) 7243-14648  
**Fax:** +49 (0) 7243-17996  
**E-Mail:** info@jung-fluid.de

Data Sheet  
**2x IPZ 1-HR 7**  
subject to modifications