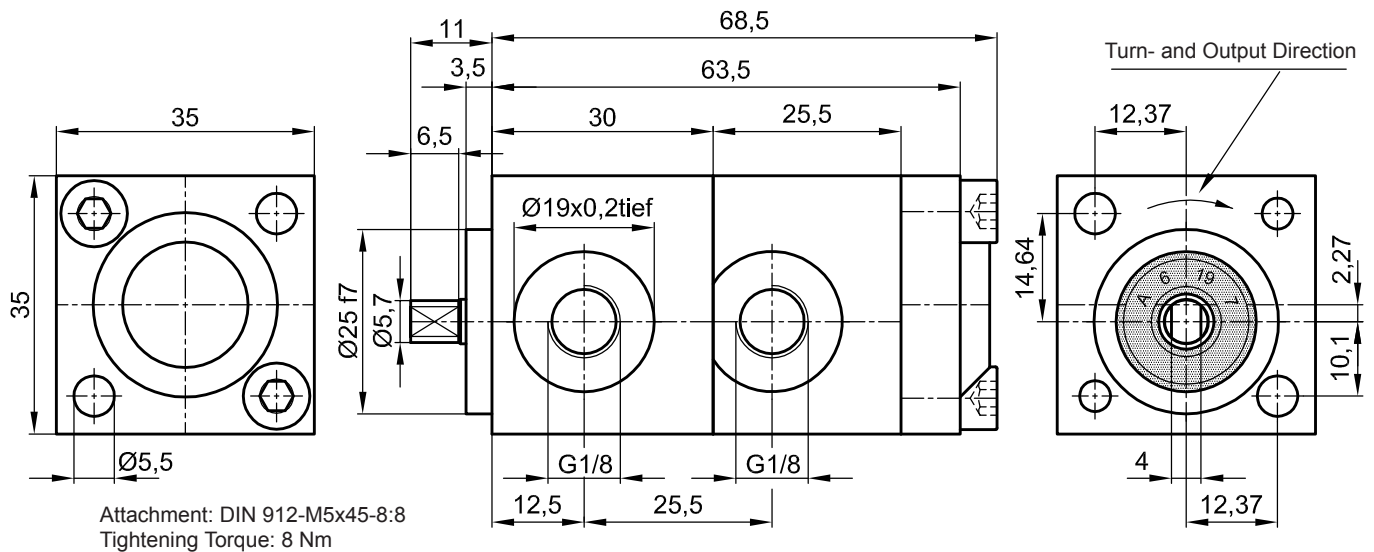


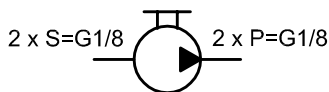
Internal Gear Driven Pump IPZ 1 - HR 3 Double with 2 x 0,18 ccm/RPM

Default Design (Clockwise Shaft Rotation Viewed)



The technical data are based on a viscosity of 46 sq mm/s

Symbol:

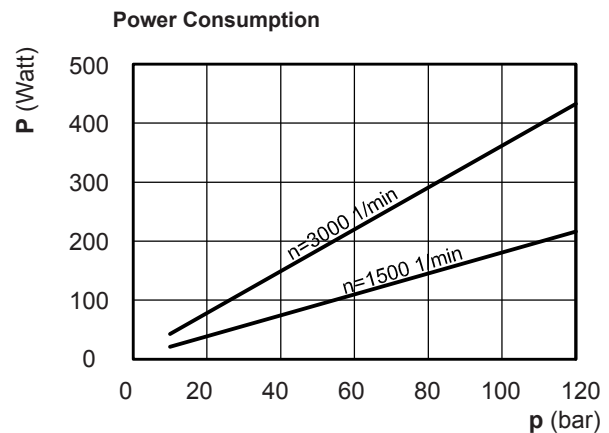
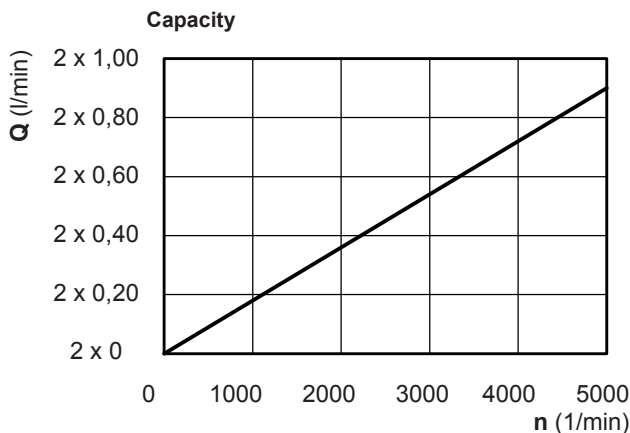


ccm/ rpm	Press./bar max.		RPM max.		RPM min.	Mass	Order No.
	P1	P max	Press. P1	Depress.	Press. P1		
2 x 0,18	80	120	4000	5000	1000	500 g	30079-142

P1 = Working Pressure max. P max. = Pressure Peak

Working Pressure / bar							
Capacity at 1.500 RPM (l/min)							
Power Consumpt./W at 1.500 RPM							
bar	2x10	2x20	2x40	2x60	2x80	2x100	2x120
l/min	2x0,26	2x0,25	2x0,24	2x0,22	2x0,20	2x0,18	2x0,15
Watt	18	36	72	108	144	180	216

Working Pressure / bar							
Capacity at 3.000 RPM (l/min)							
Power Consumpt./W at 3.000 RPM							
bar	2x10	2x20	2x40	2x60	2x80	2x100	2x120
l/min	2x0,53	2x0,52	2x0,51	2x0,49	2x0,47	2x0,45	2x0,42
Watt	36	72	144	216	288	360	432



Please specify Pressure, RPM, Temperature, Gain and the Duty Cycle by ordering!



Jung-Fluidtechnik GmbH
Mohrenstrasse 7
D-76275 Ettlingen

Phone +49 (0) 7243-14648
Fax: +49 (0) 7243-17996
E-Mail: info@jung-fluid.de

Data Sheet
2x IPZ 1-HR 3
subject to modifications