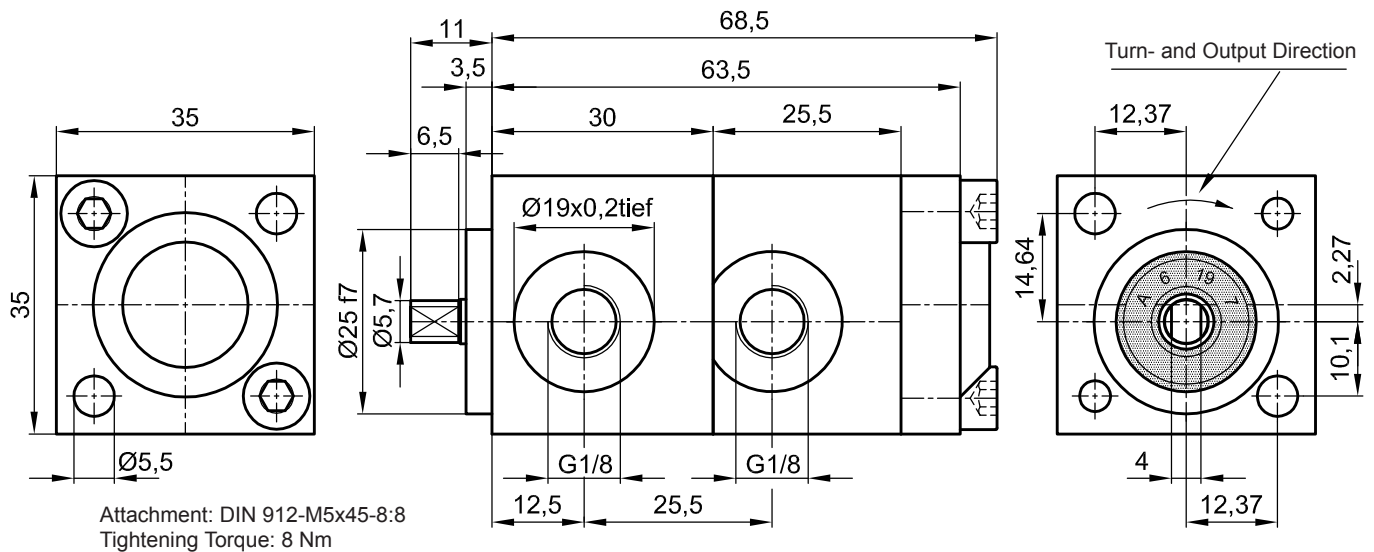


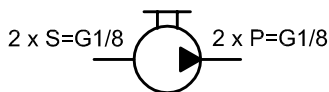
# Internal Gear Driven Pump IPZ 0 - HR 3 Double with 2 x 0,09 ccm/RPM

Default Design (Clockwise Shaft Rotation Viewed)



The technical data are based on a viscosity of 46 sq mm/s

Symbol:

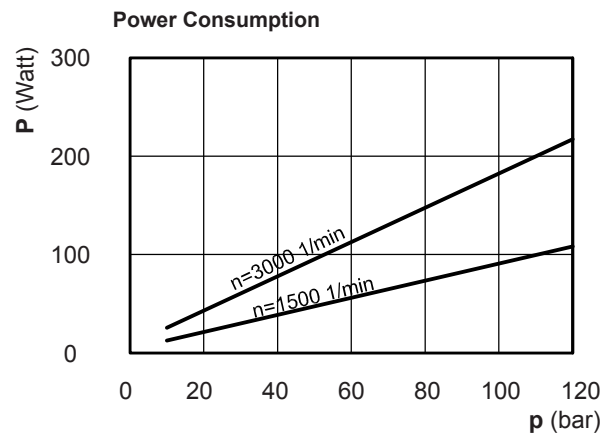
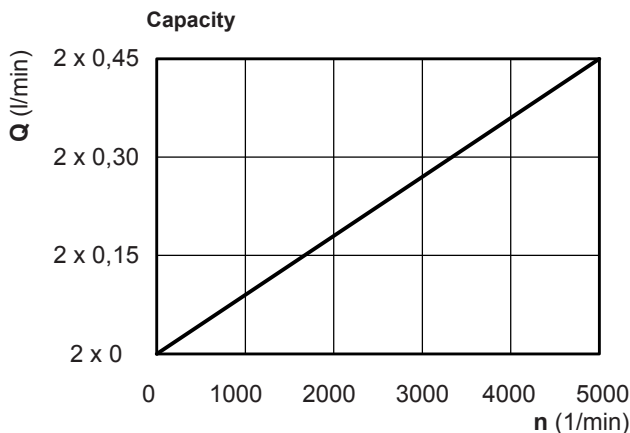


ccm/ rpm	Press./bar max.		RPM max.		RPM min.	Mass	Order No.
	P1	P max	Press. P1	Depress.	Press. P1		
2 x 0,09	80	120	4000	5000	1000	500 g	30077-141

P1 = Working Pressure max. P max. = Pressure Peak

Working Pressure / bar							
Capacity at 1.500 RPM (l/min)							
Power Consumpt./W at 1.500 RPM							
bar	2x10	2x20	2x40	2x60	2x80	2x100	2x120
l/min	2x0,14	2x0,14	2x0,14	2x0,14	2x0,13	2x0,12	2x0,11
Watt	9	18	36	54	72	90	108

Working Pressure / bar							
Capacity at 3.000 RPM (l/min)							
Power Consumpt./W at 3.000 RPM							
bar	2x10	2x20	2x40	2x60	2x80	2x100	2x120
l/min	2x0,28	2x0,28	2x0,28	2x0,28	2x0,27	2x0,26	2x0,25
Watt	18	36	72	108	144	180	216



Please specify Pressure, RPM, Temperature, Gain and the Duty Cycle by ordering!



**Jung-Fluidtechnik GmbH**  
Mohrenstrasse 7  
D-76275 Ettlingen

**Phone** +49 (0) 7243-14648  
**Fax:** +49 (0) 7243-17996  
**E-Mail:** info@jung-fluid.de

Data Sheet  
**2x IPZ 0-HR 3**  
subject to modifications