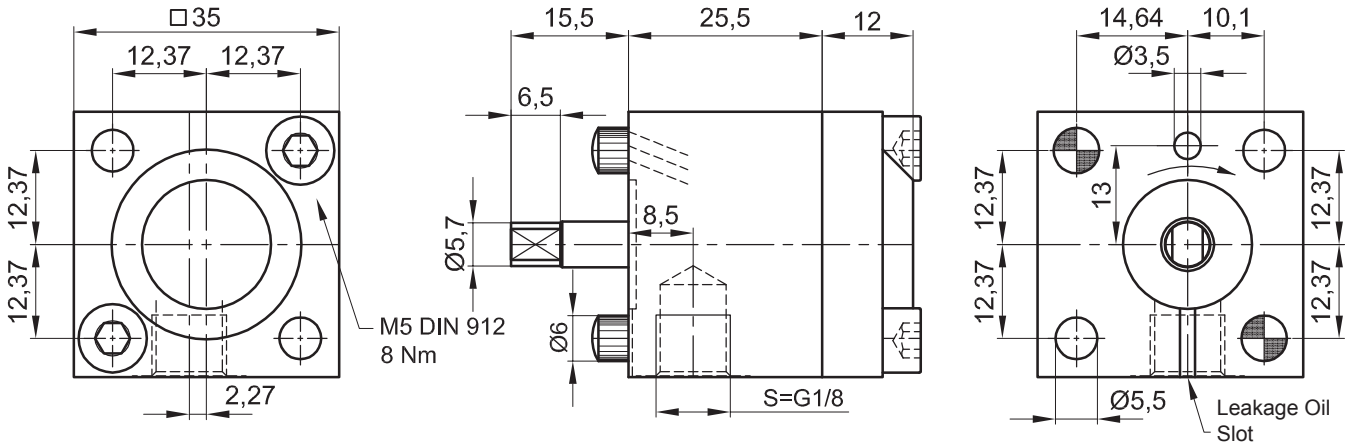


# Internal Gear Driven Pump IPZ 1 - HER 7 Mounting with 0,45 ccm/RPM

Default Design (Clockwise Shaft Rotation Viewed)



Symbol:



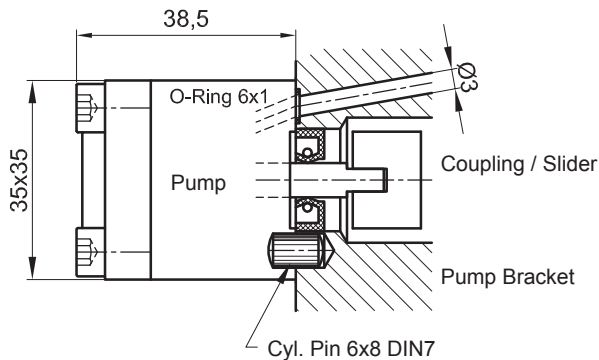
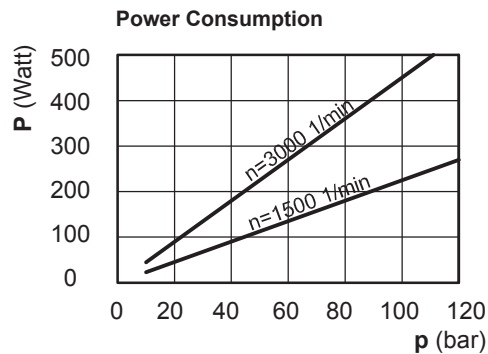
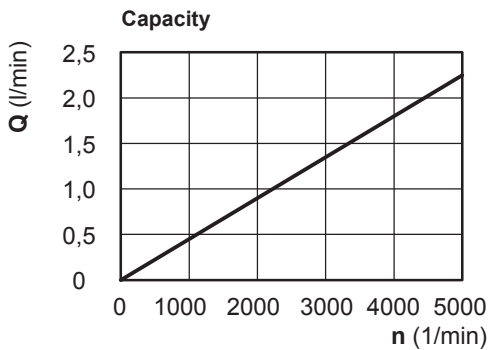
The technical data are based on a viscosity of 46 sq mm/s

ccm/ rpm	Press./bar max.		RPM max.		RPM min.	Mass	Order No.
	P1	P max	Press. P1	Depress.	Press. P1		
0,45	80	120	4000	5000	1000	280 g	10016-142

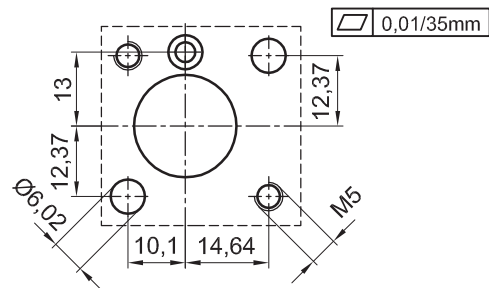
P1 = Working Pressure max. P max. = Pressure Peak

Working Pressure / bar							
Capacity at 1.500 RPM (l/min)							
Power Consumpt./W at 1.500 RPM							
bar	10	20	40	60	80	100	120
l/min	0,65	0,65	0,63	0,59	0,54	0,48	0,41
Watt	23	45	90	135	180	225	270

Working Pressure / bar							
Capacity at 3.000 RPM (l/min)							
Power Consumpt./W at 3.000 RPM							
bar	10	20	40	60	80	100	120
l/min	1,34	1,33	1,31	1,27	1,22	1,16	1,09
Watt	45	90	180	270	360	450	540



Drawing for Drilling: Pump Attachment (Pump Bracket)



Please specify Pressure, RPM, Temperature, Gain and the Duty Cycle by ordering!



**Jung-Fluidtechnik GmbH**  
Mohrenstrasse 7  
D-76275 Ettlingen

**Phone** +49 (0) 7243-14648  
**Fax:** +49 (0) 7243-17996  
**E-Mail:** info@jung-fluid.de

Data Sheet

**IPZ 1 - HER7**  
subject to modifications